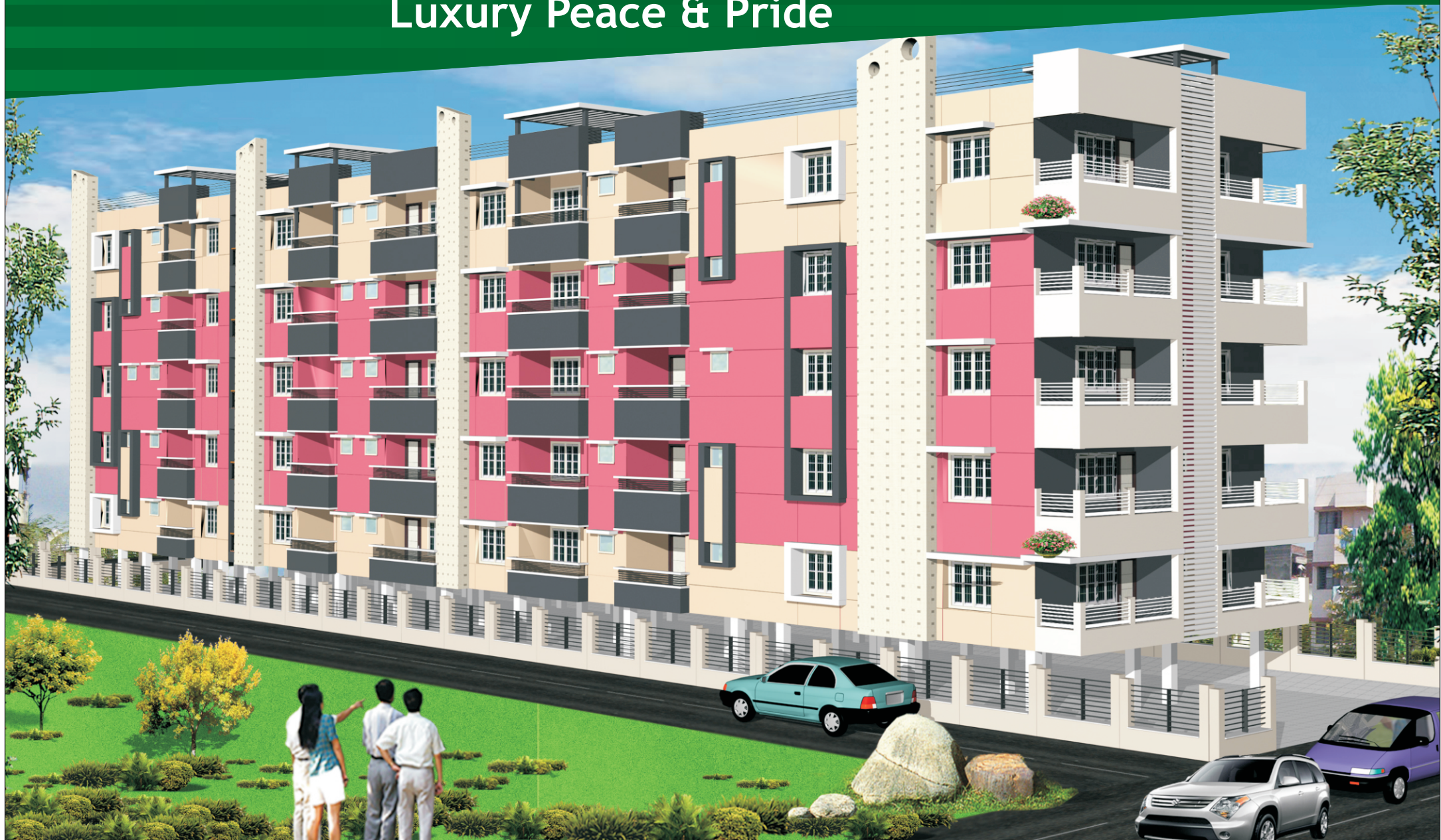


# Mangalam Vihar

Luxury Peace & Pride



A Project by: Panoramic Infratech Pvt Ltd. (PIPL)

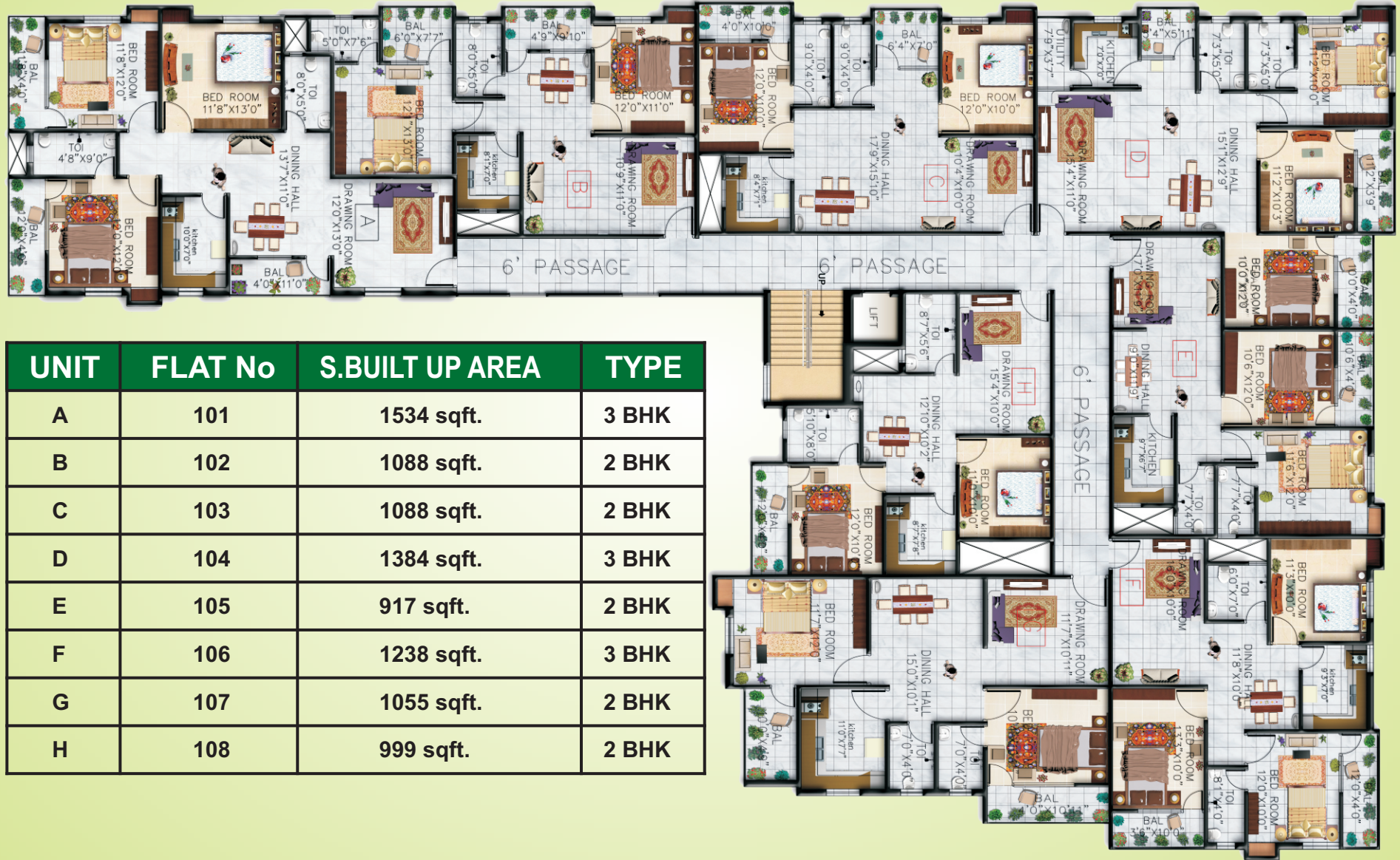
# Mangalam Vihar

A Realty Brand that is the Hallmark of Innovation Quality, Reliability & Engineering. It is blend with natural Beauty on all side placed in a green Location which offer premium living, lifestyle convenience, value for money pricing & better connectivity packed with world class amenities & facilities, it takes your life style up several nothes.

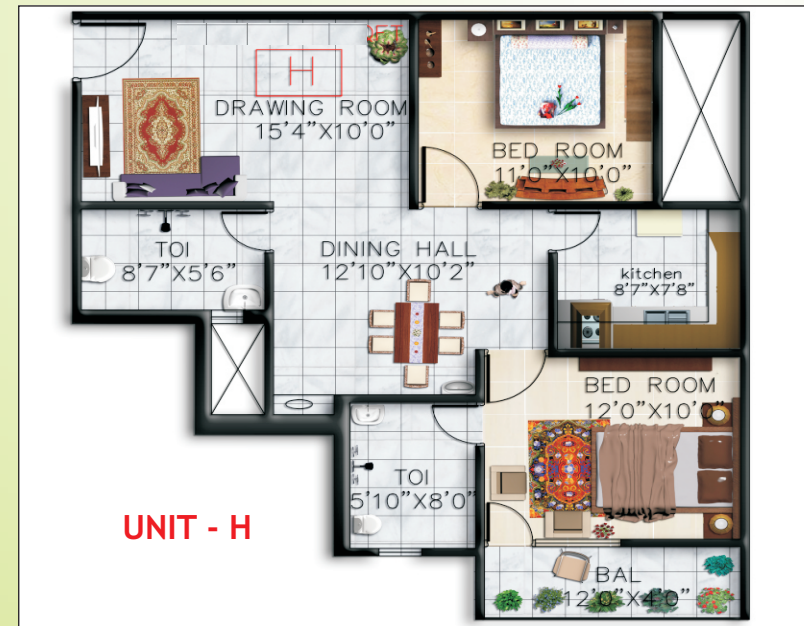
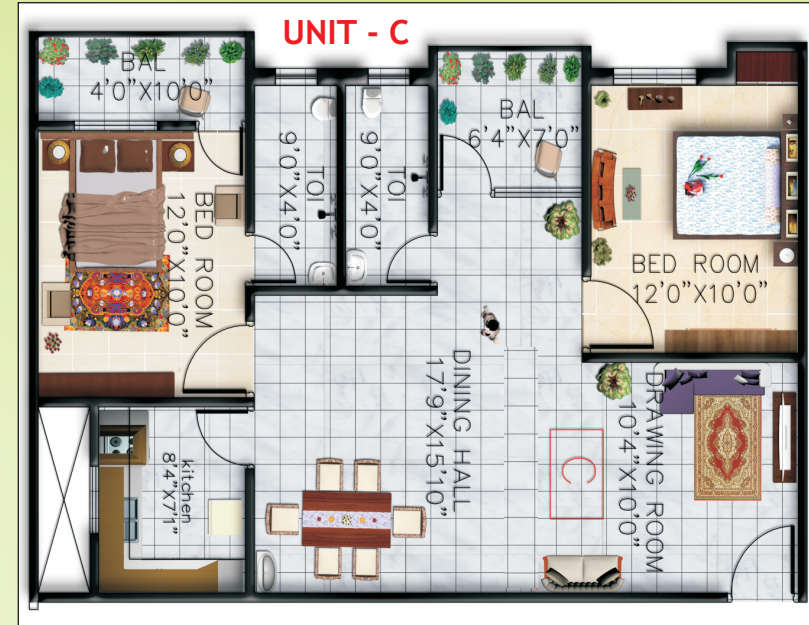
A home should ideally the place where you are most relaxed. **Mangalam Vihar** built with a lot of thoughts & Planing, making your home so Peacefull & serene that it makes you fill like being the part of it. Project located in the vicinity of broad road links which leads to Bank, Schools, Recreational Zone & Health Care Facilities. Which insure a peaceful & pleasant life style.



# Cluster Floor Plan

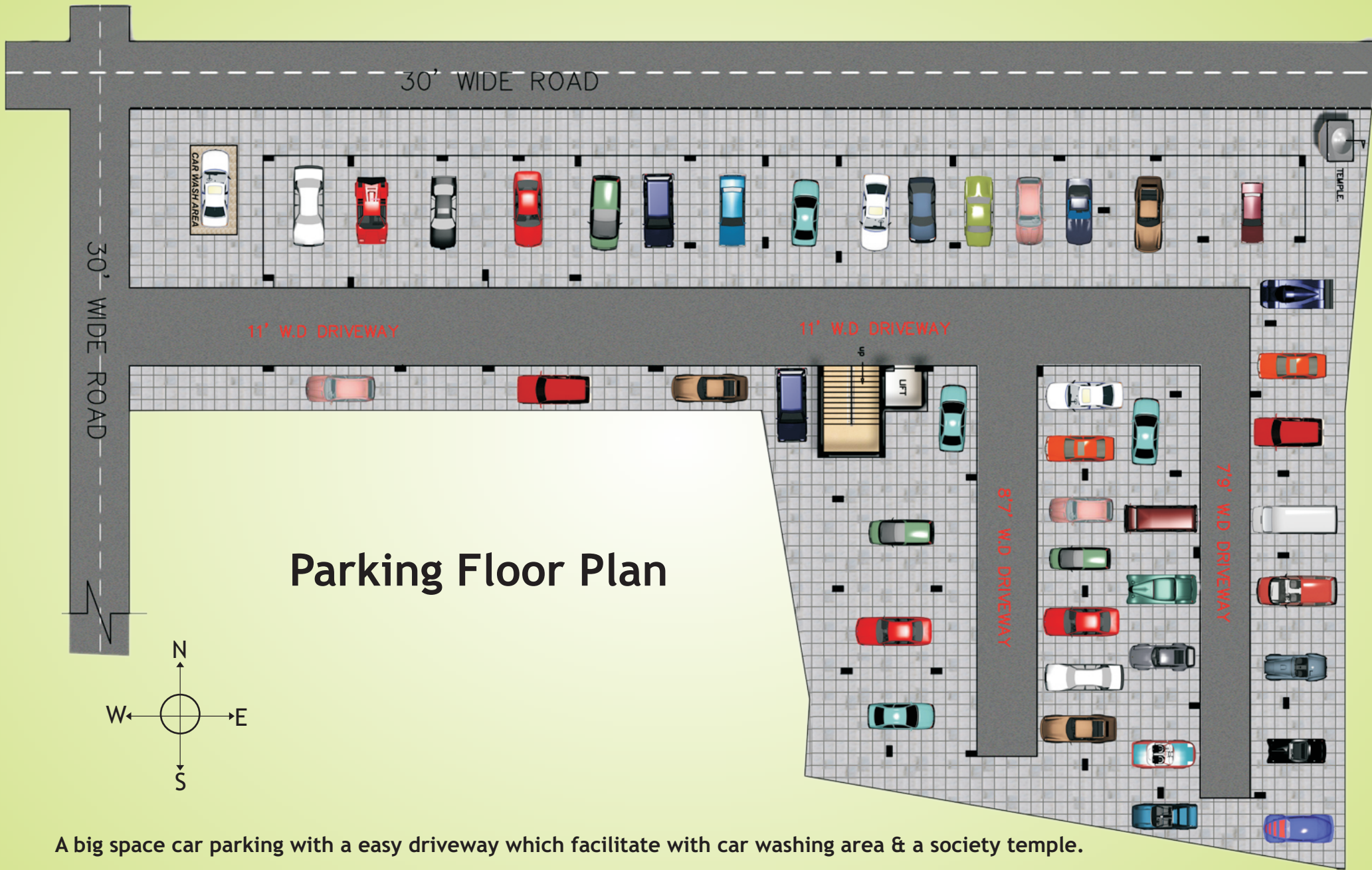


UNIT	FLAT No	S.BUILT UP AREA	TYPE
A	101	1534 sqft.	3 BHK
B	102	1088 sqft.	2 BHK
C	103	1088 sqft.	2 BHK
D	104	1384 sqft.	3 BHK
E	105	917 sqft.	2 BHK
F	106	1238 sqft.	3 BHK
G	107	1055 sqft.	2 BHK
H	108	999 sqft.	2 BHK



## GEMS OF SPECIFICATION

- The Project welcome you with a modern & Elegant Elevation .
- Technically designed to assure natural sunlight and fresh air ventilation.
- Exclusive entrance gate & designer compound wall for the entire project.
- Landscape and parking with broom finish concrete.
- Round the clock security with manned security cabin and inter com facility.
- Ample car parking at ground floor (on extra cost).
- Elevator with 24hrs. generator backup & fully equipped with safety device.
- Reserve car parking for all flats is designed as well as enough parking are provided for visitors.
- Three Side of the plot have approach road.
- Provision for cable TV & Telephone point.
- Intercom facility to individual flat for personalized security.
- Society Temple with in Building Campus.



A big space car parking with a easy driveway which facilitate with car washing area & a society temple.

## The Facilities and Amenities

### **Structure**

Building designed with R.C.C. framed structure (Earth quake resistand)

### **Flooring**

Entire floor of the flats & common space will be of Marble / Vetrified Tiles

### **Kitchen**

Granite kitcken platform with stainless steel sink & glazed tiles dado upto 2 ft. height. provision for hot & cold water in sink, exhaust fan space in window

### **Bathroom**

Provision for hot & cold water system. Glazed tiles in eye soothing color on wall up to lintel level. Sanitary ware and fixtures of standard ISI make,

### **Electrical**

Concealed electrification with fire retardant cables & switches of ISI make. Provision for adequate light and power point, TV and telephone point in living and master bed. Power distribution with MCB's.

### **Windows**

Double track powder coated Aluminum window with glazed glass & decorative window grills.

### **Doors**

Sai wooden door of decorative teak veneer flush door with brass fitting & all other flush door with alluminium fittings.

### **Plaster**

Water proof exterior plaster with wall putty & permanent algae paint, interior plaster with P.O.P. and single coat primer

Note : All specification, designs, layouts, conditions etc. are only indicative and some of these can be changed at the changed at the discretion of the builder. They are purely conceptual and not a legal offence.

# LOCATION Map



## Panoramic Infratech Pvt. Ltd.

Bhagwati Complex, Bank Road, Dhanbad - 826001

Head Office : #3c, Jagdeopath, Bailey Road Patna- 14

Branch Office: Dani Bigha, Near Circuit House, Aurangabad